



Date: March 1998
Order No.: S-SI-91/48A
Supersedes: S-SI-91/48, October 1992
Group: 91

Revision: *Replacement procedure and part numbers for additional replacement date label inserts added*

SUBJECT: ALL MODELS WITH AIRBAG

AIRBAG UNIT REPLACEMENT LABEL AND REPLACEMENT DATE LABEL INSERTS

Based on all available information, a **15 year** period of durability and functional safety can be assumed for airbag units.

Figure 1 shows the replacement label location on the B-pillar of the driver's door.

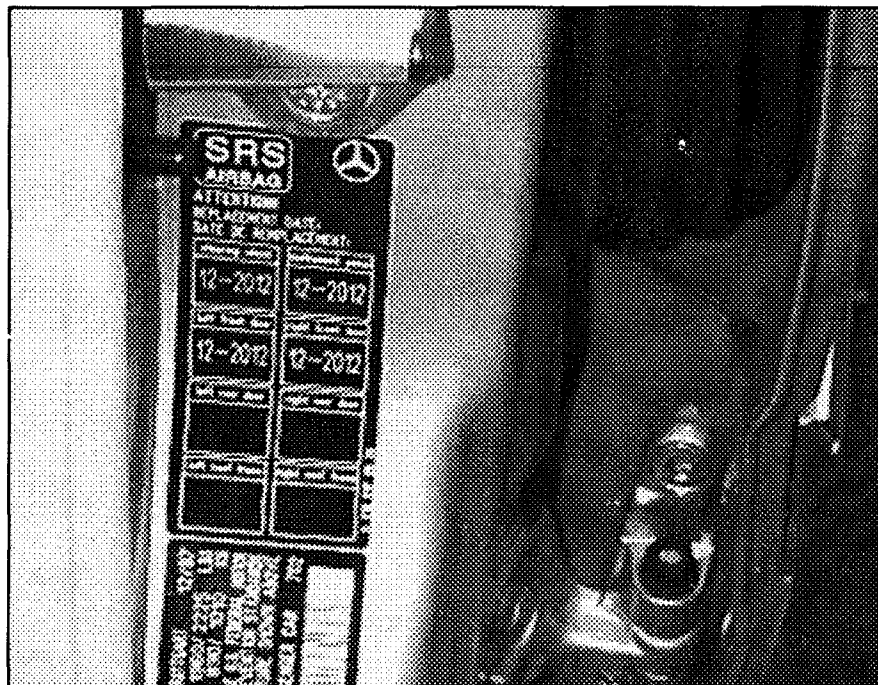


Figure 1

P91.60-2052-11

This bulletin has been created and maintained in accordance with MBNA-SLP 5.1, Document and Data Control, and MBNA-SLP 16.1, Control of Quality Records.

Determining proper replacement label and replacement date label inserts

A. The airbag replacement label (Figure 1) has been damaged, however all airbags are functional.

1. A **blank** airbag replacement label and an appropriate replacement date label insert (Figure 2) for each intact airbag should be ordered (see Parts Information).
2. To determine which replacement date label insert to order, add 15 years to the **production year** of the vehicle (see "Determining proper replacement date label insert").
3. After removing the damaged original label, affix the **blank** replacement label to the B-pillar below the driver's door striker. Affix the replacement date label insert (Figure 2) for each intact airbag into the appropriate field on the **blank** replacement label.

B. One or more of the airbags need to be replaced, and the replacement label (Figure 1) has been damaged as well.

1. A **blank** replacement label (Figure 1) should be ordered (see Parts Information), along with the appropriate replacement date label insert for the airbags which are **still functional** (not being replaced) (Figure 2).
2. After removing the damaged original label, affix the replacement date label insert for each airbag which is **still functional into the appropriate blank space** of the blank replacement label.
Note: An airbag which is being replaced is supplied with a new replacement date label insert.
3. Please be certain to affix the supplied label for the replacement airbag into the appropriate field of the blank replacement label (Figure 2).
4. Affix the completed replacement label to the B-pillar below the driver's door striker.

C. One or more of the airbags need to be replaced, and the airbag replacement label (Figure 1) located on the B-pillar of the driver's door remains intact.

1. Affix the replacement date label insert (Figure 2) **as supplied** with the replacement airbag to the appropriate field in the airbag replacement label located on the B-pillar of the driver's door.

Note: Both replacement labels are self-adhesive.

Determining proper replacement date label insert

Example: **Production Year** **1993**
 15 year replacement date ¹⁾ **+ 15**

 Replacement date **2008**

- 1) If the airbag was replaced, a new label with a replacement date determined by the replacement airbag's production date should have been installed at the same time. Therefore, this date may vary from the original label.

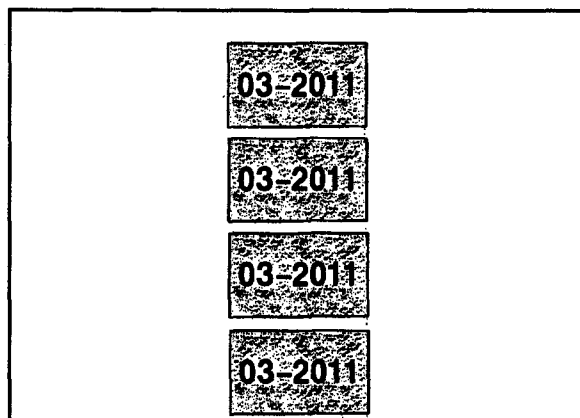


Figure 2

P91.60-2054-01

Parts Information

Description		Part Number
Blank replacement label		210 817 05 20
	Date	Part Number
Sheet of 20 date labels	1996	A 124 817 70 20
"	1997	A 124 817 71 20
"	1998	A 124 817 72 20
"	1999	A 124 817 73 20
"	2000	A 124 817 74 20
"	2001	A 124 817 75 20
"	2002	A 124 817 76 20

Continued.

Parts Information (continued)

	Date	Part Number
Sheet of 20 date labels	2003	A 124 817 77 20
"	2004	A 124 817 78 20
"	2005	A 124 817 79 20
"	2006	A 124 817 80 20
"	2007	A 124 817 81 20
"	2008	A 124 817 90 20
"	2009	A 124 817 91 20
"	2010	A 124 817 92 20
"	2011	A 124 817 93 20
"	2012	A 124 817 94 20
"	2013	A 124 817 95 20
"	2014	A 124 817 96 20
"	2015	A 124 817 97 20